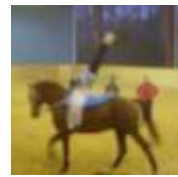


**Camp Dates**

- ★ August 11-16
- ★ August 18-23
- ★ August 25-30



**Registration**



Name \_\_\_\_\_

Address \_\_\_\_\_

City \_\_\_\_\_ State \_\_\_\_\_

Zip \_\_\_\_\_ Country \_\_\_\_\_

Phone \_\_\_\_\_

FAX \_\_\_\_\_

Email \_\_\_\_\_

Age \_\_\_\_ Sex \_\_\_\_ Vaulting Level \_\_\_\_\_

Riding Level \_\_\_\_\_ Gymnastics

exp. \_\_\_\_ Dance exp. \_\_\_\_ Can swim \_\_\_\_

Camp Dates Desired \_\_\_\_\_

Mail with \$200 deposit (*non-refundable*  
*60 days prior to camps*) to reserve your place to:

**Blue Star Farm**  
832 Copeland Road  
Suffolk, VA 23434  
757 621 6442

**Dead line May 31.**

European equestrian programs begin with training in vaulting, or gymnastics on a moving horse. Give your young equestrian athlete a foundation of a proper seat, understanding the motion of the horse and the thrill of dancing with their four-footed friend. *Blue Star* Vaulting & Equestrian Center is proud to announce their summer camp program for beginning to international level competitors. At this brand new equestrian- gymnasium facility, camps will give young athletes a week of the basics of vaulting, riding, gymnastics and dance. They will also have fun with swimming, and games.



**Cost**

- ★ Day camp: 9am-5pm Mon-Sat \$400/week (lunch included), if 2 or 3 weeks 350 the following weeks. If siblings 10% discount.
- ★ Overnight camps: arriving Sun evening through departure Saturday evening: \$750 /week. if 2 or 3 weeks \$700 the following weeks. If siblings 10% discount.



Matthias Lang



**Vaulting Teams**  
Bring your Team  
Bring your Horse



Nancy Stevens-Brown

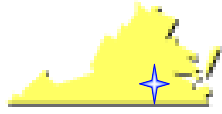
**About the Instructors**

**Vaulting**  
**Nicole d'Auriol**, owner, Blue Star Farm, riding instructor and vaulting coach, Blue Star Vaulting Team.

**Sarah d'Auriol**, International vaulter and, Level 7 Gymnast, Blue Star Vaulting.team.

**Gymnastics & Conditioning**  
**Lauri Illi**, olympic level rhythmic gymnast and rhythmic gymnastic coach.  
**Sarah d'Auriol**

**Dance**  
**Melissa Moore**, professional dance instructor with 33 years experience, award winning choreographer & circuit judge.  
*Subject to change according to availability.*



Where in the world is *Blue Star Farm*  
Vaulting & Equestrian Center?

Suffolk, VA is a small community approximately 30 minutes southwest of Norfolk, 45 minutes from Virginia Beach and 1 hour east of Emporia, VA, bordering the west side of the Great Dismal Swamp. Besides easy access to the great attractions of Norfolk and VA Beach, there is fishing, boating and hiking in or near Suffolk. Minutes north of the North Carolina border, Suffolk is also within 2½-3 hours from Chincoteague Island across the bay, Richmond to the northwest or Raleigh, NC to the southwest.

Getting there...

By plane, *Blue Star Farm* is just 45 minutes from Norfolk International Airport.

By car...

...from the South—take I-95 or I-85 north to Rt. 58 east. Follow Rt. 58 east toward Suffolk approximately 1 hour from Emporia, VA. Turn right on Lummis Rd., (Progressive Distribution Concepts warehouse sign on the corner) then take the first left on Copeland Rd. After crossing railroad tracks, *Blue Star Farm* is the first driveway on the left approximately 0.9 miles down Copeland Rd.

...from the Northwest (Richmond/Washington DC)—take I-95 south to I-295 bypassing Richmond. Take the exit for 460 east toward Suffolk. \*Continue to Rt. 58 west toward Emporia. **Do not take Suffolk exits off Rt. 58.** When Rt. 58 changes from a 4-lane divided highway to a 4-lane local road beginning a 45 mph speed limit, count 5 traffic lights. Passing the fifth light at Manning Bridge Rd., continue 2.1 miles to Lummis Rd. on left (1 mile past Johnson Gardens on left, and Progressive Distribution Concepts warehouse sign on left corner of Lummis). Turn left on Lummis Rd., then take the first left on Copeland Rd. After crossing railroad tracks, *Blue Star Farm* is the first driveway on the left approximately 0.9 miles down Copeland Rd.

...from the Northeast—take I-95 south toward Richmond, VA and follow directions above, *or* from northern Delaware, take Rt. 1 and/or Rt. 13 south to Dover, then continue on Rt. 13 south to the Chesapeake Bay Bridge-Tunnel. Cross Bridge-Tunnel and continue on Rt. 13 south to I-64 east toward VA Beach. Continue on I-64 which joins 13 & 58 toward Suffolk/Emporia. When I-64 ends,



## Blue Star Farm



### Vaulting & Equestrian Center

### 2009 SUMMER CAMP



832 Copeland Road  
Suffolk, VA 23434  
757-621 6442

[Nicolebsf@aol.com](mailto:Nicolebsf@aol.com)  
[www.bluestarfarm-VA.com](http://www.bluestarfarm-VA.com)



#### Our Facilities

Bring your whole team & horses too!

- ★ 160x80 covered arena with mezzanine observation
- ★ 220x90 lighted outdoor arena
- ★ 14 stalls with auto waterers, rubber mats
- ★ hot/cold water wash stall
- ★ private tack lockers
- ★ 8 turnout fields
- ★ Fully equipped gymnastic center & swimming pool.

